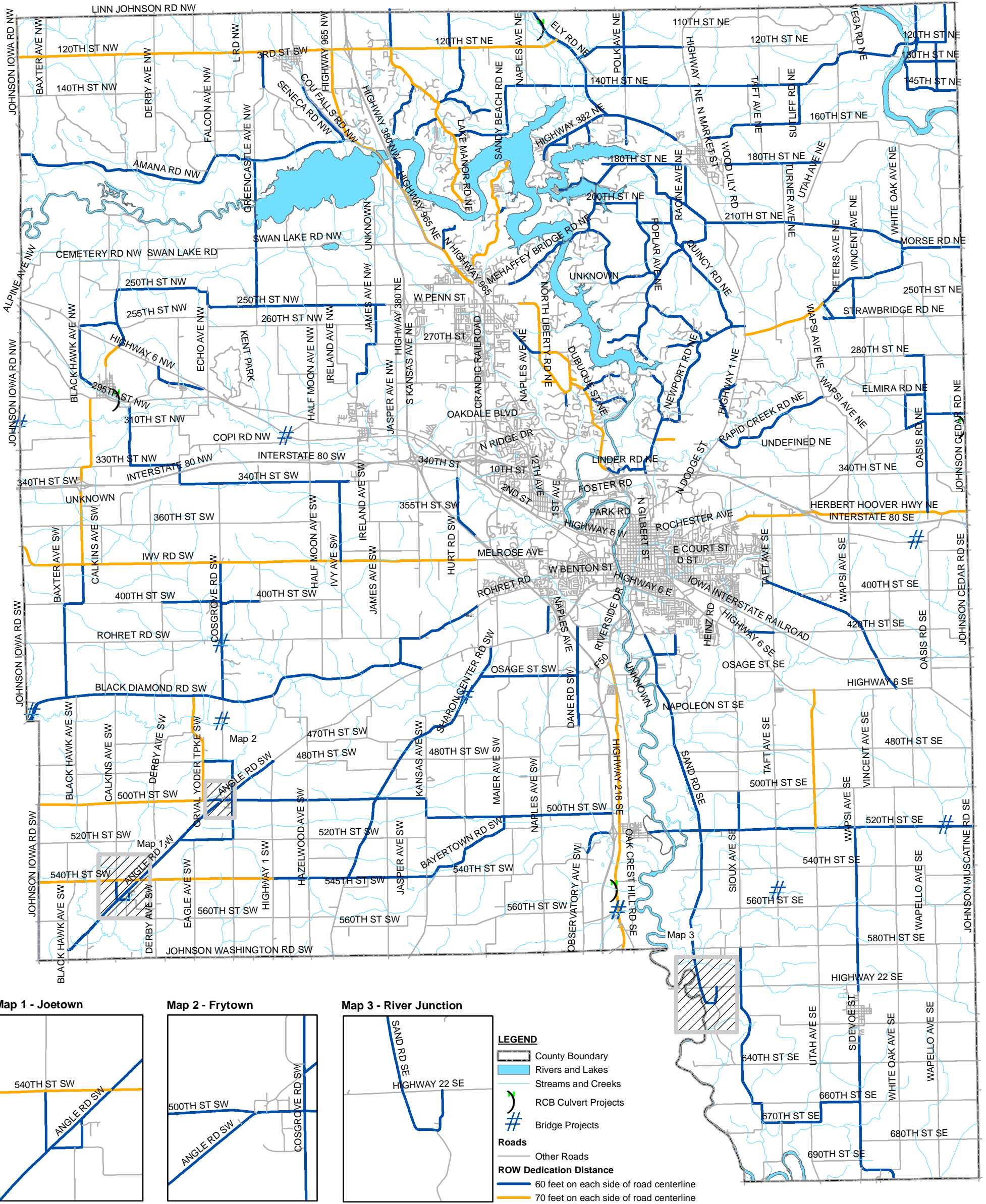
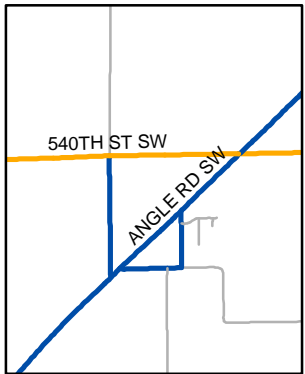




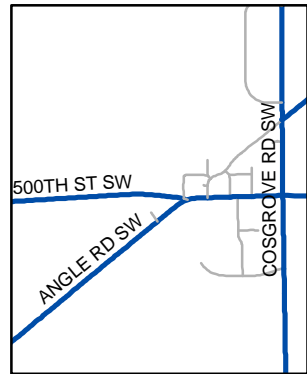
Adopted 2011 Johnson County ROW Dedication Map



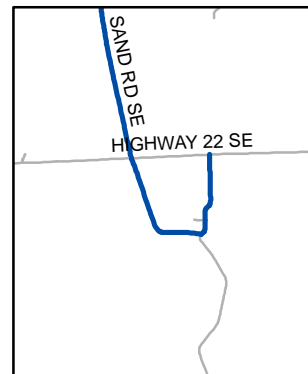
Map 1 - Joetown



Map 2 - Frytown



Map 3 - River Junction



LEGEND

- County Boundary
- Rivers and Lakes
- Streams and Creeks
- RCB Culvert Projects
- Bridge Projects
- Roads**
- Other Roads
- ROW Dedication Distance**
- 60 feet on each side of road centerline
- 70 feet on each side of road centerline

0 0.5 1 2 3 4 Miles

NOTE: Additional ROW required at Bridge and RCB Culvert locations will vary from 60 feet to 100 feet from road centerline.

2011 Future Projects ROW Dedication Map Adopted by the Johnson County Board of Supervisors on March 31st, 2011.

